

## Clinical Image

### Superficial Angiomyxoma causing Torsion of an Extra-Digit

Tariq Osman Abbas\*

Pediatric Surgery Department, Hamad General Hospital, Doha, Qatar

**How to cite:** Abbas TO. Superficial Angiomyxoma causing torsion of an extra-digit. J Neonatal Surg. 2018; 7:13.

This is an open-access article distributed under the terms of the Creative Commons Attribution License, which permits unrestricted use, distribution, and reproduction in any medium, provided the original work is properly cited.

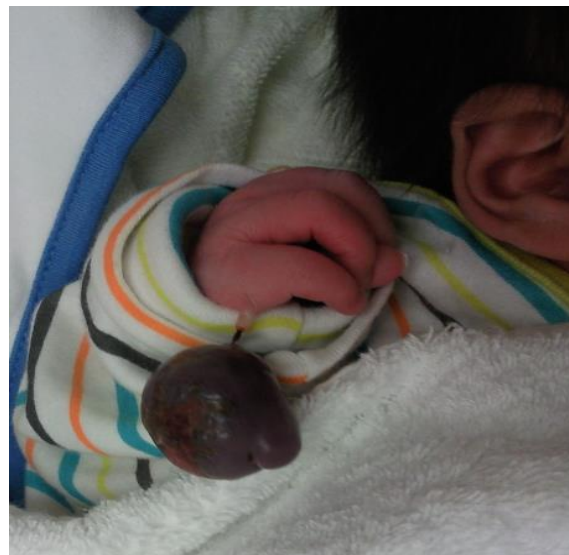


Figure 1: Angiomyxoma of extra digit.

A baby boy referred from the newborn unit at day 1 of life with a pedunculated soft tissue 2x3.5x 4 cm mass located axially at an extra digit like position (Fig. 1). The rest of the local and general examination was normal. Ultrasonography of the abdomen did not reveal any other congenital anomaly. The lesion was excised. Histopathological examination reported the lesion to be an angiomyxoma. The child was followed up for 7 years and no signs of recurrence were noted.

Superficial angiomyxoma is a rare benign neoplasm characterized by a conglomerate of multiple, moderately to sparsely cellular angiomyxoid nodules with scattered small blood vessels.[1] A lesion in an extra digit, as reported here, of a newborn is rare and to date no reports have been found to exist in the literature. To our knowledge, no metastasis or malignancy of superficial angiomyxoma has been reported. However, long-term follow-up studies have revealed local recurrence of the tumor.

**Consent:** The author has submitted signed consent form from legal guardian of the patient and available with editorial office.

#### REFERENCES

1. Calonje E, Guerin D, MacCormac D, Fletcher CDM. Superficial angiomyxoma. Am J Surg Pathol. 1999; 23:910-7.

**Correspondence\*:** Tariq Osman Abbas, Pediatric Surgery Department, Hamad General Hospital, Doha, Qatar

E mail: tariq2c@hotmail.com

©2018, Abbas

Submitted: 14-08-2017

Accepted: 10-10-2017

Conflict of interest: None

Source of Support: Nil